

SKILLS FOR WORK 1

What you need to know

What will I study?

You will study a programme with OCR which will comprise of Life and Living at Entry 3 level, up to Diploma Level, Employability Skills and Functional Skills in English, Mathematics and ICT. Topics may include: Horticulture; Animal care; Agriculture; Running an Enterprise; Catering as well as modules covering examples such as: rights at work; health and safety and communication in the workplace.

How will I be taught?

You will be taught through a combination of practical and theoretical sessions. Learning will take place in the vocational area being studied and students will have the opportunity of choosing areas/modules which suit their interests.

How will I be assessed?

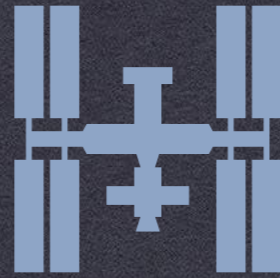
Assessment is completed via a portfolio of evidence, which may include observation, Q&A, practical or written assessments. Functional Skills assessments will take place throughout the year as appropriate to the individual learner.



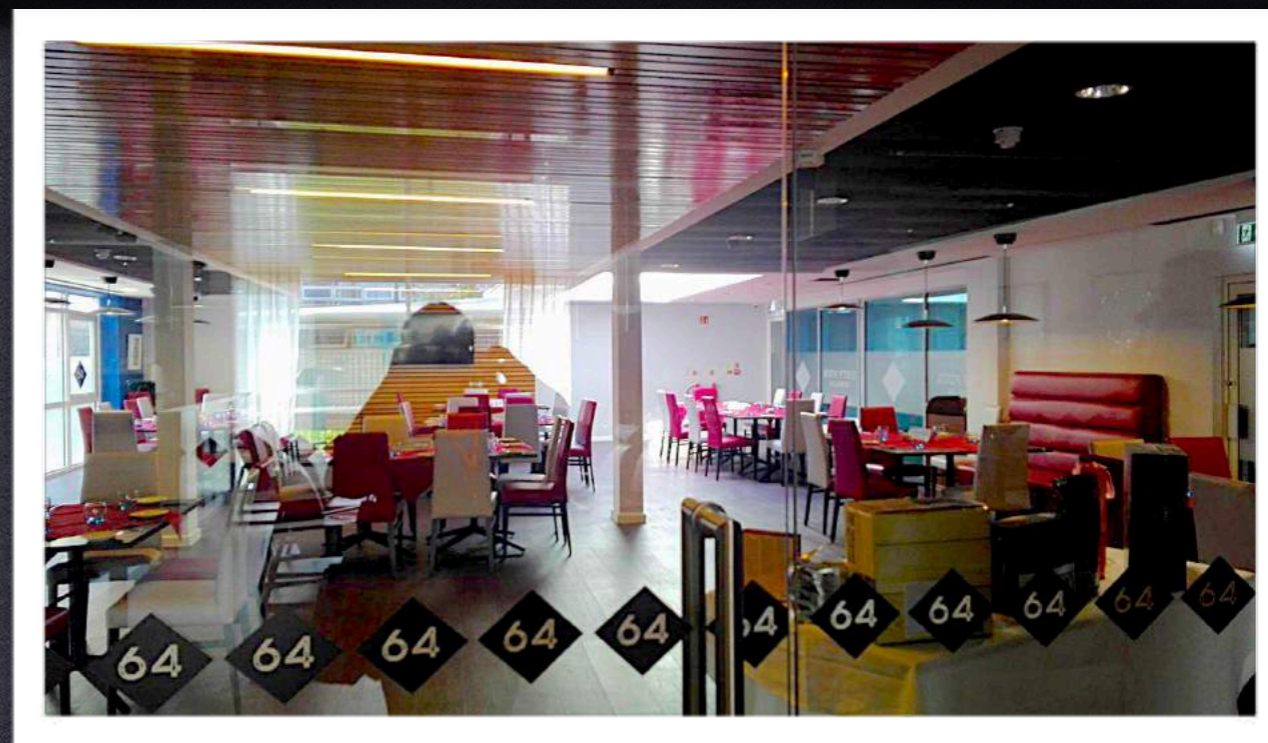
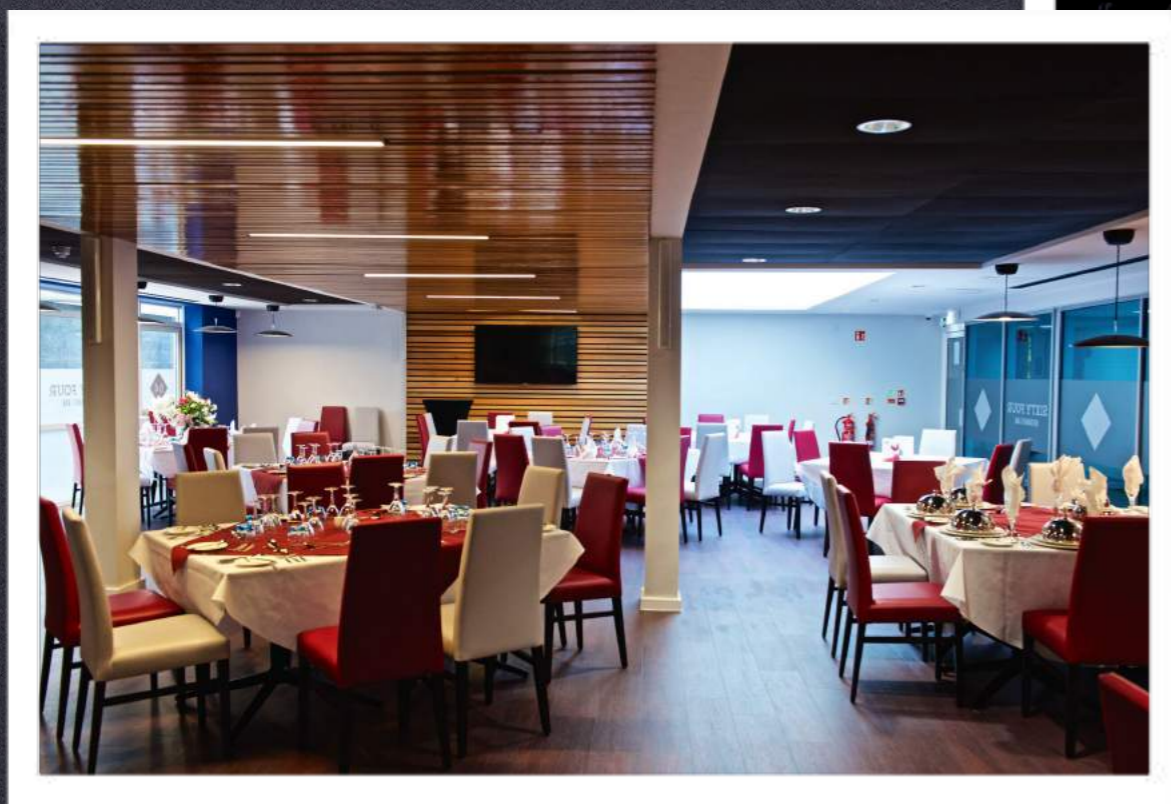
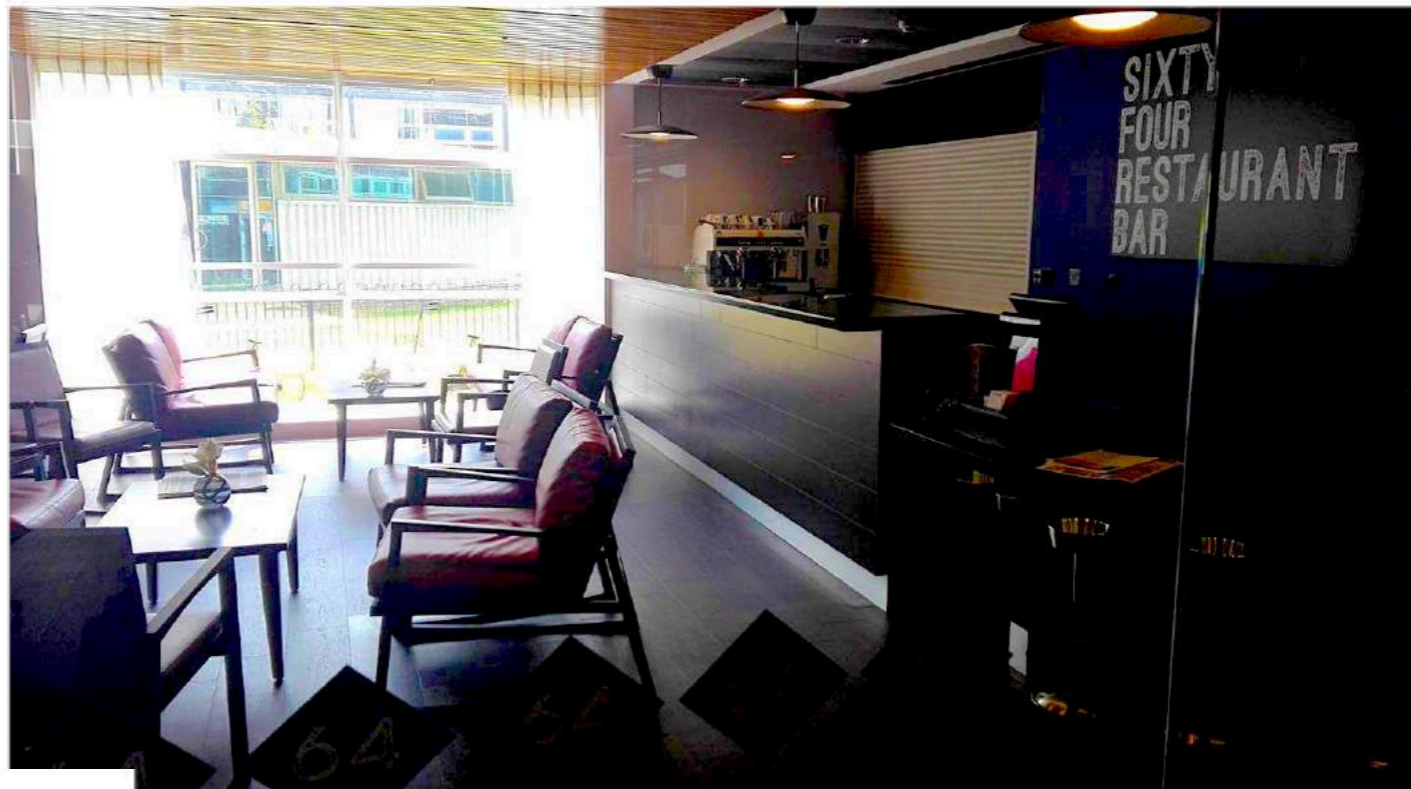
22TH JUNE: CHICHESTER COLLEGE - CHICHESTER (WEST SUSSEX)



22TH JUNE: CHICHESTER COLLEGE - CHICHESTER (WEST SUSSEX)



22TH JUNE: CHICHESTER COLLEGE - CHICHESTER (WEST SUSSEX)



22TH JUNE: CHICHESTER COLLEGE - CHICHESTER (WEST SUSSEX)



Chichester
college

collede



22TH JUNE: CHICHESTER COLLEGE - CHICHESTER (WEST SUSSEX)



Glenwood
School

A learning community where
excellence is the standard

23 TH JUNE: GLENWOOD SCHOOL
EMSWORTH (HAMPSHIRE)

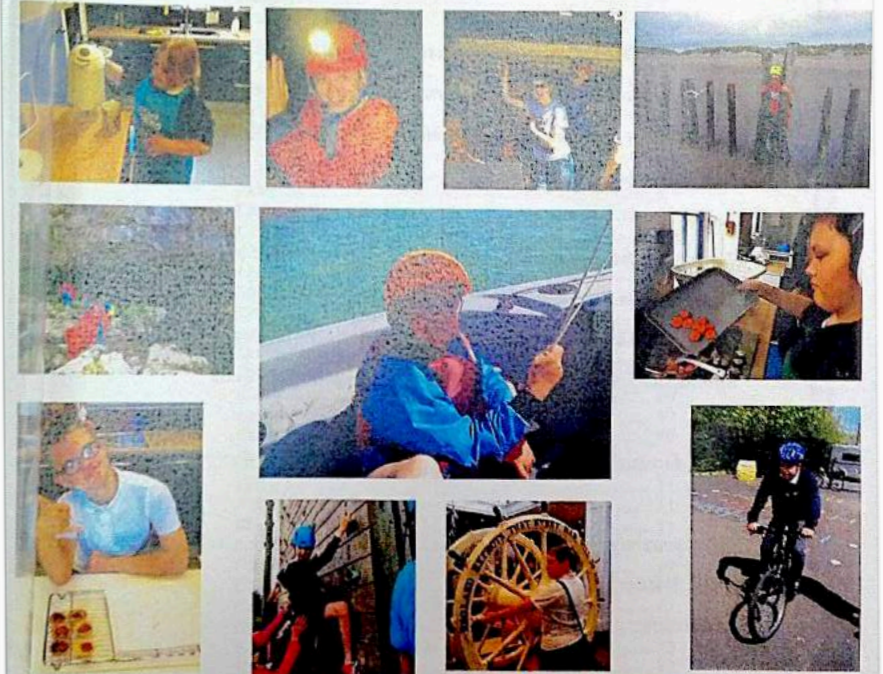
DAY VISIT TO A SPECIAL SCHOOL

Tour of school & observe lessons
Discussing with teachers



Glenwood
School

A learning community where
excellence is the standard



PROSPECTUS

Washington Road, Emsworth, Hants. PO10 7NN
Headteacher: Ruth Witton, B.Sc (Hons) MA (Ed) NPQH

On 24th June we visited Glenwood Special School.

All children at Glenwood have a Statement of Special needs or Education Health Care Plan which specifies both the nature of the learning difficulty and the provision which should be made to meet those needs. All admissions to the school are arranged through the Local Authority.

At Glenwood, there were 98 pupils in 2016-2017 from year 7 to year 11 (age 11-16), eleven SEN teachers and about seventeen LSAs.

All pupils follow the National Curriculum at a level which meets their individual needs. The curriculum aims to prepare pupils for life after school by providing them with the skills, knowledge and understanding that will enable them to function in the wider community.

All pupils participate in a Personalized Development Learning program with aims to develop pupils' practical living skills (using public transport, visiting local shops, gardening and so on).

Annual reviews: Each year a pupil's Statement of Special Education Need or Education Health Care Plan is reviewed in a meeting of parents, pupils, staff and any appropriate professionals.

The two main purposes of this meeting are:

1. to measure progress against targets set the previous year;
2. to ensure the statement or EHCP is still an accurate reflection of the pupil's needs.

In Year 9 this meeting incorporates a Transition Plan, which considers the final two years of schooling, focusing on work related learning, work experience and careers education/guidance in addition to the options available to the pupil once he /she leaves school.

At Glenwood, we observed lessons of Cooking and Maths, we talked to Lsas and teachers and we also visited all the school.

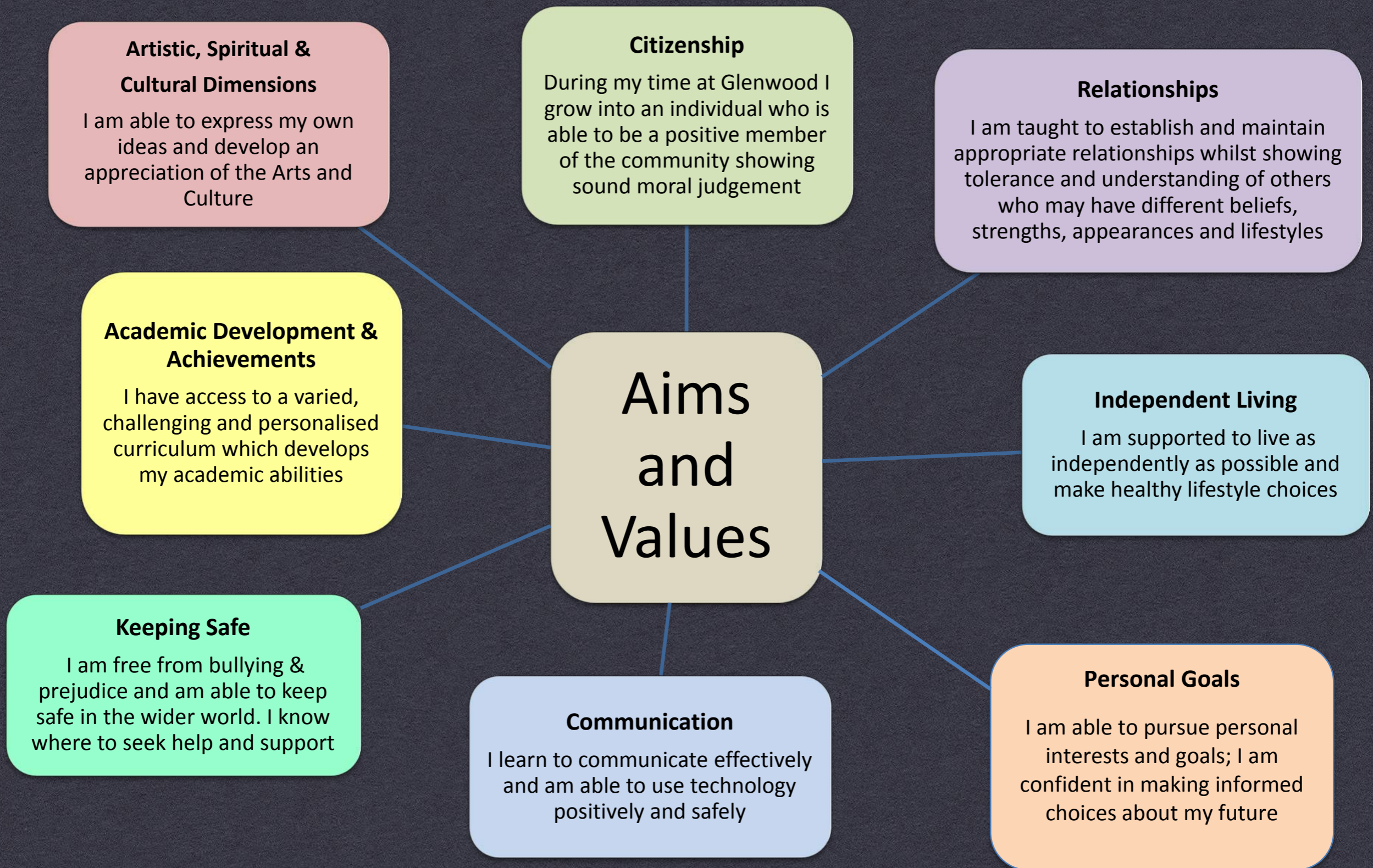
**Table A: Type of provision attended
January 2014**

Almost all provision for pupils with SEN without statements is in mainstream primary, secondary and independent schools. In contrast, around 4 in 10 pupils with statements are in special schools

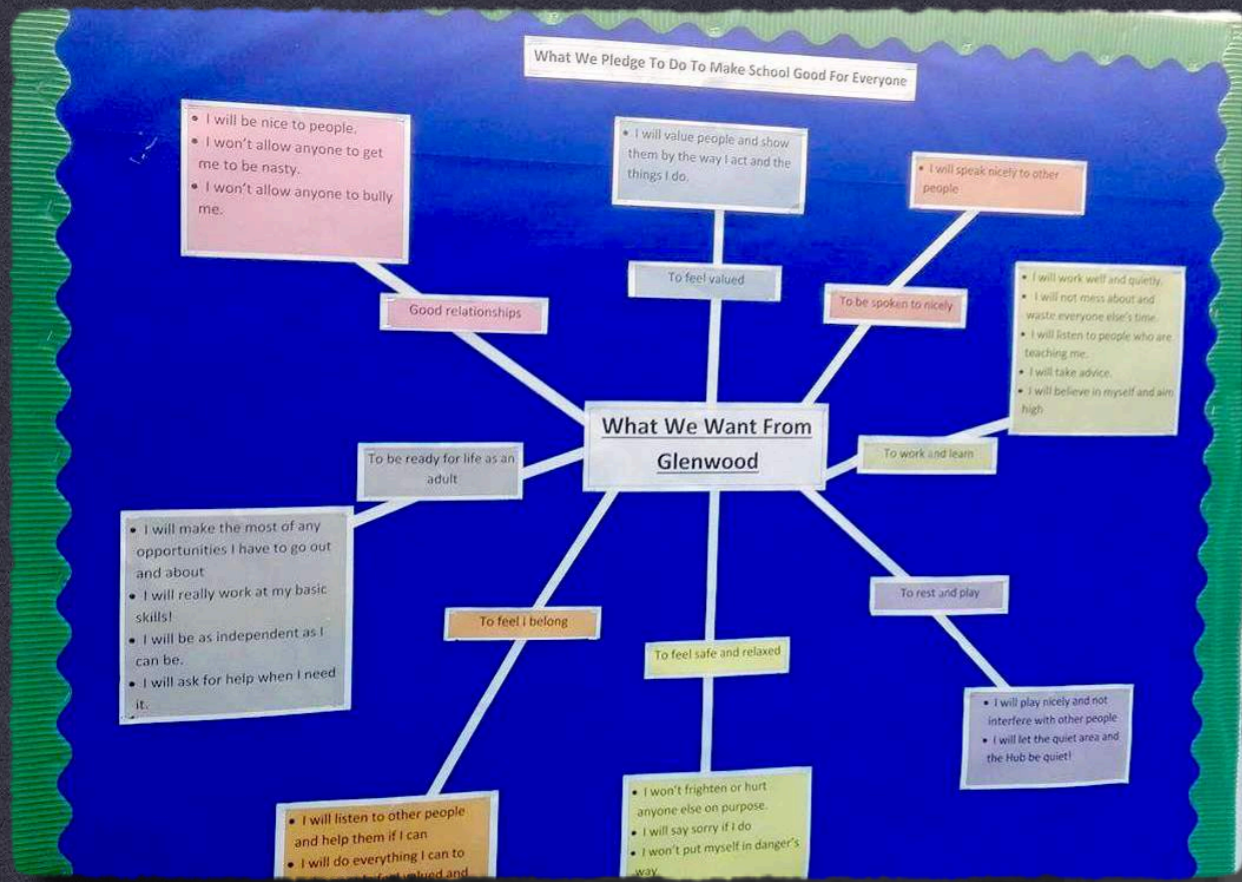
School Type	SEN without a statement	SEN with a statement
State-funded primary	53.4%	26.2%
State-funded secondary	40.2%	25.7%
Independent	5.2%	5.1%
Pupil Referral Units	0.7%	0.7%
Maintained nursery	0.4%	0.1%
Maintained special	0.2%	40.5%
Non-maintained special	0.0%	1.7%
Total	100.0%	100.0%

23TH JUNE: GLENWOOD SCHOOL - EMSWORTH (HAMPSHIRE)

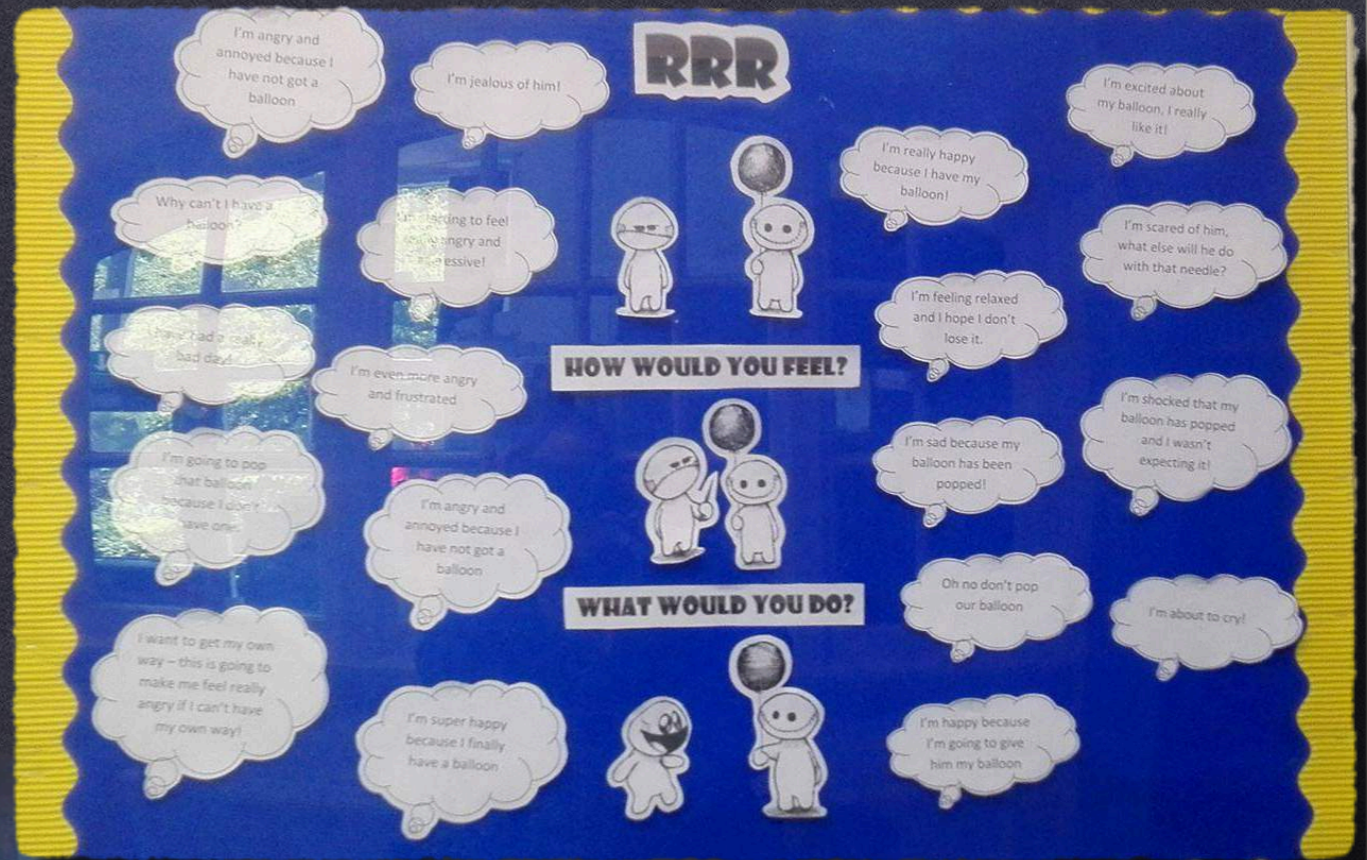
GLENWOOD – A Learning Community Where Excellence is the Standard



23TH JUNE: GLENWOOD SCHOOL - EMSWORTH (HAMPSHIRE)



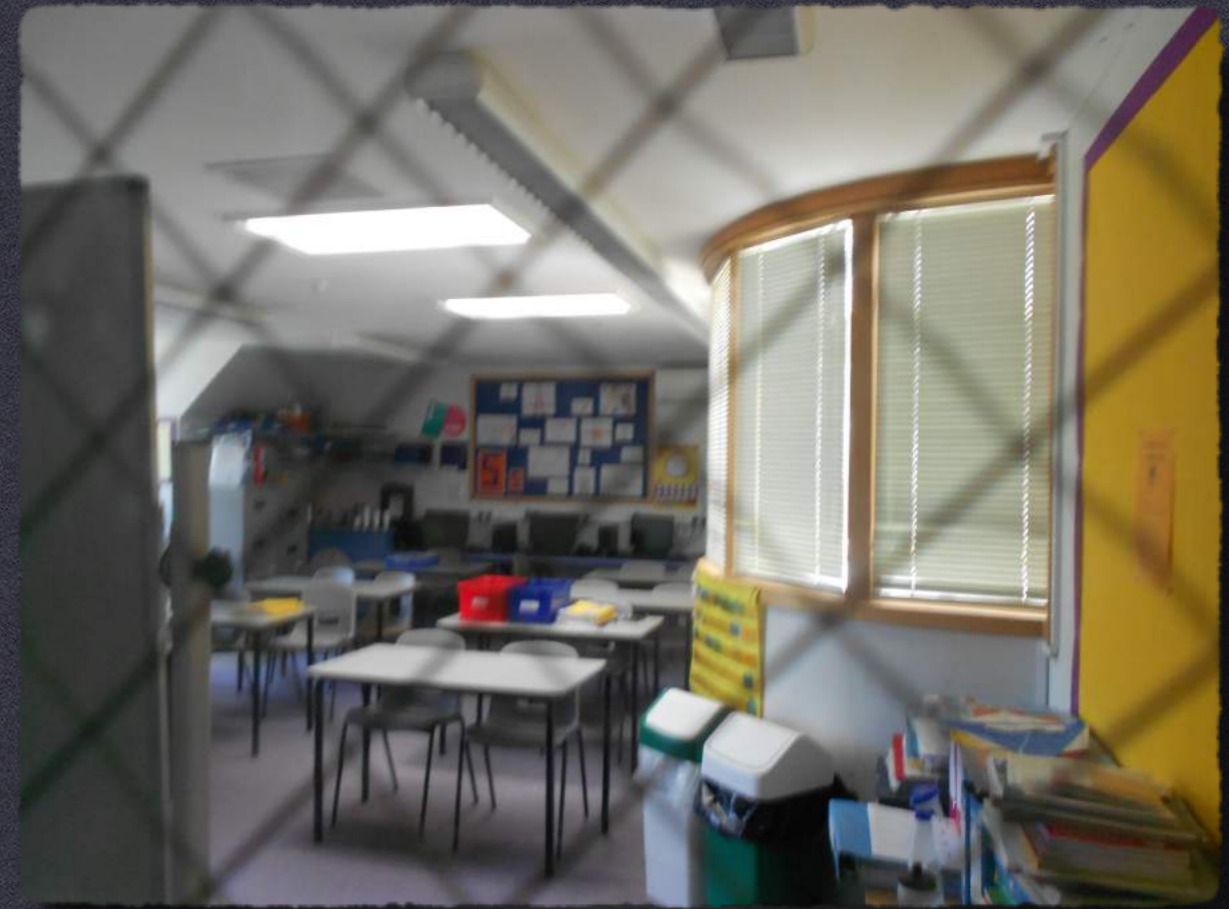
23 TH JUNE: GLENWOOD SCHOOL EMSWORTH (HAMPSHIRE)



23 TH JUNE: GLENWOOD SCHOOL
EMSWORTH (HAMPSHIRE)



23 TH JUNE: GLENWOOD SCHOOL EMSWORTH (HAMPSHIRE)



WINCHESTER

On 24th June, we visited the city of Winchester.

Winchester is the county town of Hampshire, England.

The city is located at the western end of the South Downs National Park, along the course of the River Itchen. It is situated 61 miles (98 km) south-west of London.

At the time of the 2011 Census, Winchester had a population of 45,184.

Winchester developed from the Roman town of Venta Belgarum, which in turn developed from an Iron Age oppidum.

Winchester's major landmark is Winchester Cathedral, one of the largest cathedrals in Europe, with the distinction of having the longest nave and overall length of all Gothic cathedrals in Europe.

The city is home to the University of Winchester and Winchester College, the oldest public school in the United Kingdom still using its original buildings.



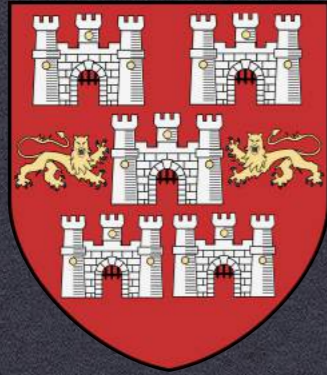


Winchester

City Council



24TH JUNE: DAY VISIT TO WINCHESTER



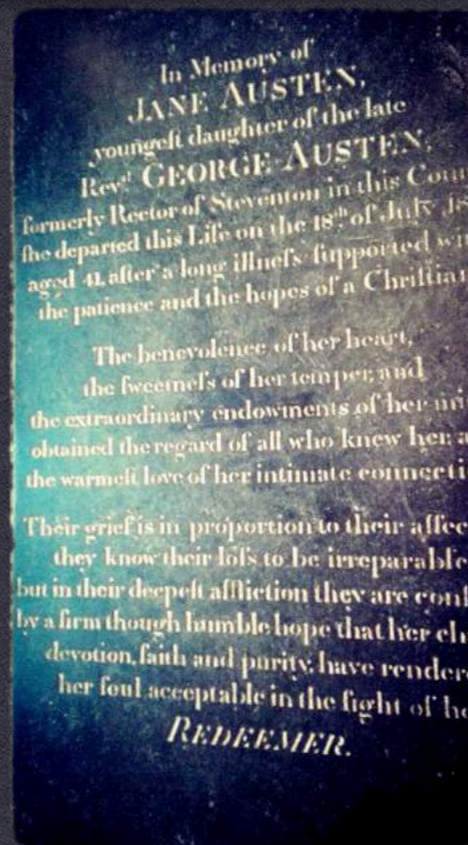
24TH JUNE: DAY VISIT TO WINCHESTER



The Great Hall, one of the finest surviving aisled halls of the 13th century, contains a great symbol of medieval mythology, The Round Table, and is all that now remains of Winchester Castle.



Jane Austen was buried in the Winchester Cathedral. She lies under the floor of the north aisle of the nave, where you can still see her simple gravestone.





With our
Portuguese
colleagues!